

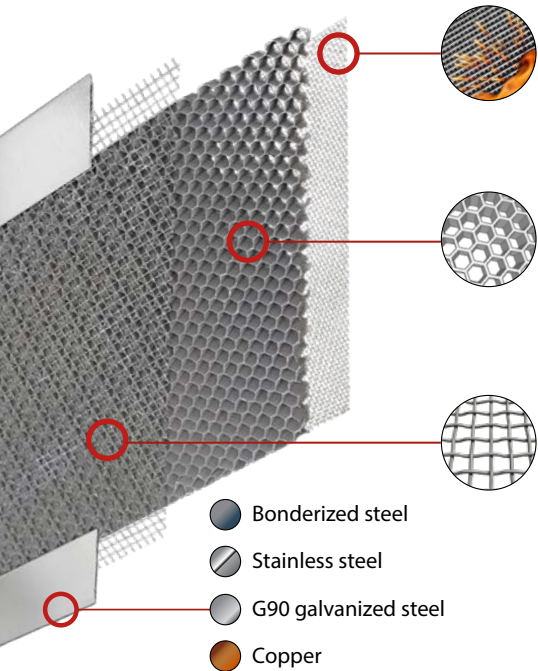


The new standard in wildfire protection

# ADVANCED WILDFIRE DEFENSE!



## Vulcan Vent Defense



### Ember Mesh

Our 304 stainless steel ember mesh provides a physical barrier for maximum ember protection!  
\* **back side faces interior**

### Vulcan Matrix

Proven for over a decade, our patented honeycomb matrix with intumescent coating, expands when exposed to heat and flames, becoming a firewall when you need it most!

### Pest Abatement

Our 1/8", galvanized steel mesh helps keep unwanted pests from entering your home.  
\* **front side faces exterior**

- Bonderized steel
- Stainless steel
- G90 galvanized steel
- Copper

## Key Benefits

- 🔥 Highest Airflow\* (NFVA)
- 🔥 Easy Retro-fit Design
- 🔥 Grants Available
- 🔥 Insurance Discounts

## Maximum Airflow

Our **baffle-free design** allows for maximum air circulation!

**Vulcan Vents are open-faced** and have the highest net-free-vent-area on the market.\*

### Airflow Benefits:

- 🔥 Fewer vents needed to meet building code
- 🔥 Proper ventilation keeps your family healthy
- 🔥 Reduced energy costs
- 🔥 Major savings when retro-fitting your home

## Fire-Rated W.U.I Vents

**Vulcan Vents meet and exceed the strictest building codes for wildfire!**

🔥 **Chapter 7A** (flame & ember intrusion)  
Tested and listed to ASTM E2886/2912

🔥 **1 Hour Fire Rated** (1 hour furnace)  
Tested and listed to ASTM E119

🍁 **CSA A93** *Certain models apply*

If you live in or near a Fire Hazard Severity Zone, fire safe vents are critical. In many states **W.U.I. vents are required!**

## Trusted by Experts



Always check your state, province, or local jurisdiction for the latest building codes and fire ordinances to ensure compliance.

For detailed listing information please visit [www.vulcanvents.com](http://www.vulcanvents.com) or scan the QR code:



\*Airflow compared to other 1-hour rated vents

Copyright © 2025 New Cal Metals Inc All Rights Reserved

# Product Choices

Over 130 different models and sizes!  
Need a custom vent? No problem!  
Vulcan Vents are easy to install!

Whether you're building a new home, or retro-fitting your current home, Vulcan Vents has the selection to fit your strategy. Vulcan Vents are paintable, easy to install and carry the latest fire ratings to keep your home safe during wildfire!



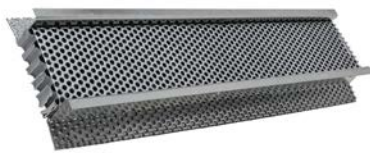
Foundation\ Soffit Vents



Dormers & Sub-bases



Access Vents



Continuous Vents



Inspection Vents

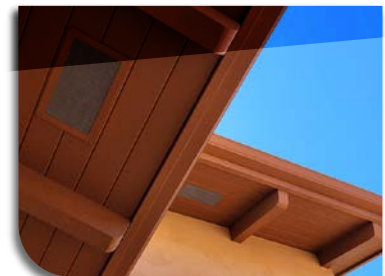
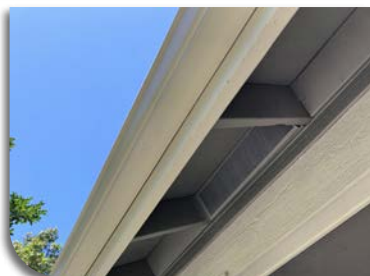


Louvered Vents

- 🔥 Removable Inspection Vents (SB 326 & 721)
- 🔥 Retro-fit & Custom Models
- 🔥 Continuous Soffit & Ridge Vents
- 🔥 Stand-alone Vulcan Matrix

- 🔥 Gable & Dormer Vents
- 🔥 Traditional Eave and Soffit Vents
- 🔥 Foundation and Crawlspace Vents
- 🔥 Rain Screens & Sub-bases

## Installation & Resources



Looking for a **Product Certified Installer**? Need an installation diagram or specification sheet? You can find **local retailers** and other resources to harden your home at **VulcanVents.com**

[www.vulcanvents.com](http://www.vulcanvents.com)

[info@vulcanvents.com](mailto:info@vulcanvents.com)

+1 916 652-7424

Connect with us!



**NEW CAL**<sup>®</sup>  
METALS INC.

Brand Manufacturing Done Right!  
[www.newcalmetals.com](http://www.newcalmetals.com)  
Loomis, California