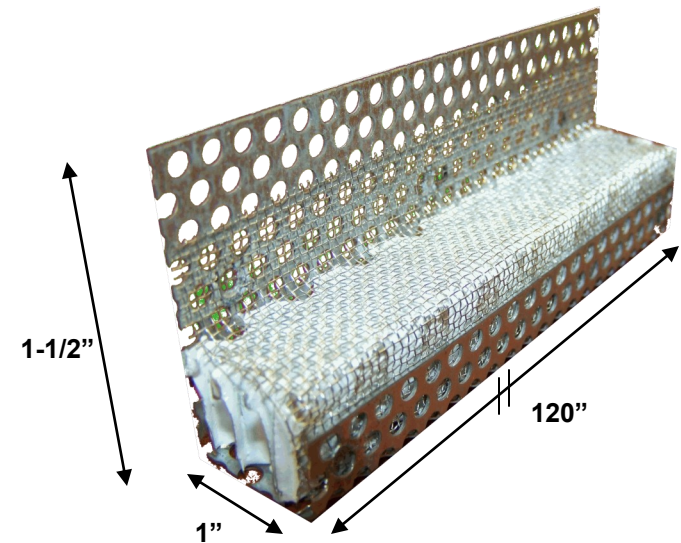
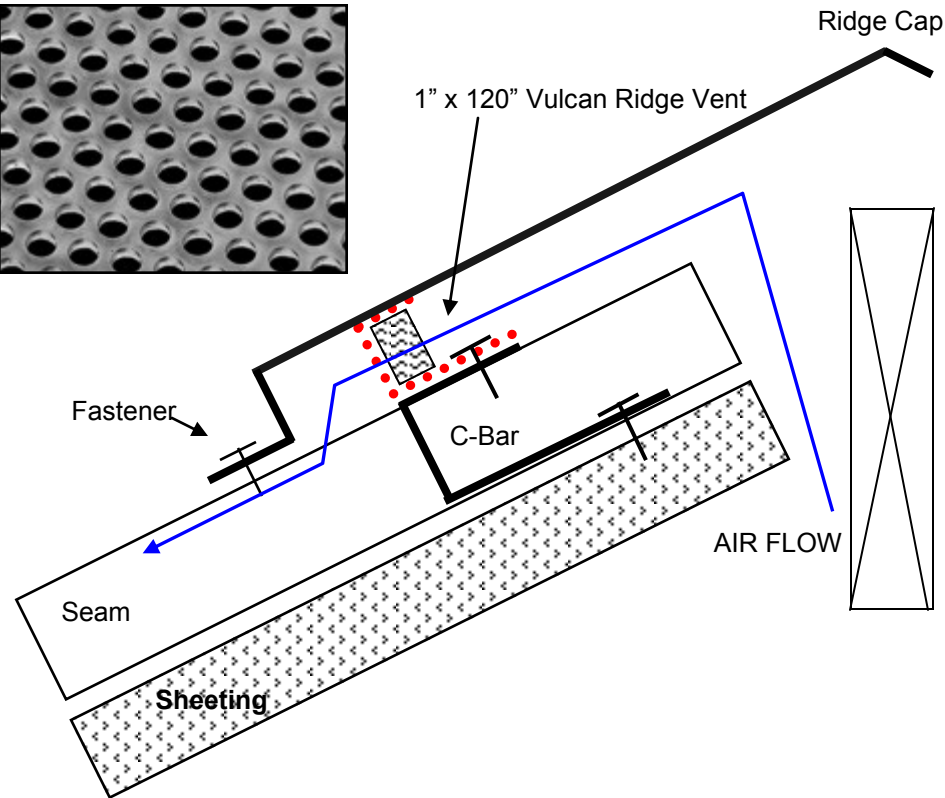
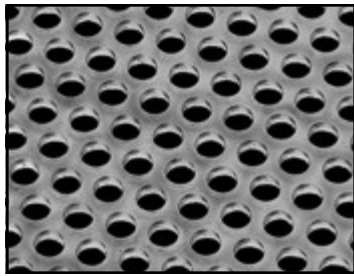


**VENTED SECTIONS
CONSTRUCTED WITH
24GA PERFORATED
GALV STEEL. HOLE
PATTERN 1/8" HOLE W/
3/16" STAGGER**



**VULCAN VENT®**

VSC1120RV :

**Vulcan Continuous Vent 1" x 120" -
Ridge Flange, NFVA 50 sq. in.**

Constructed with 24GA Galvanized, perforated Steel, fitted with patented Vulcan Technology Inc. matrix material.

Resists Fire & Ember penetration. Vulcan Vents acceptance:

CBC Ch7A Compliance: ICC-ESL 1300