

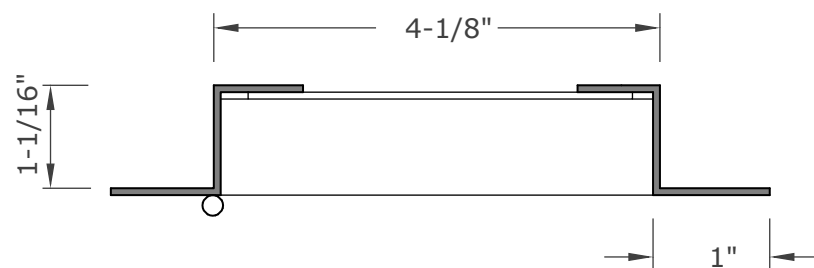
**Chapter 7A** compliant: Tested and listed to ASTM2886.  
OSFM BML listing: 8165-2192, ICC-ESL listing: 1299, 1300

**1 Hour Fire Rated**, ICC-ESL listing: 1299. **Canadian Compliance** : ICC-ESL: 1455 [CAN/ULC-S101-14]

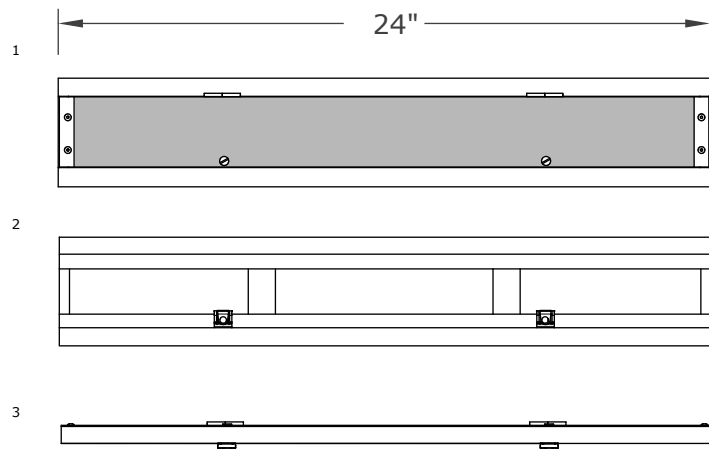
WWW.VULCANVENTS.COM (916) 652-7424 info@newcalmetals.com P.O. Box 1126 Loomis, CA. 95650



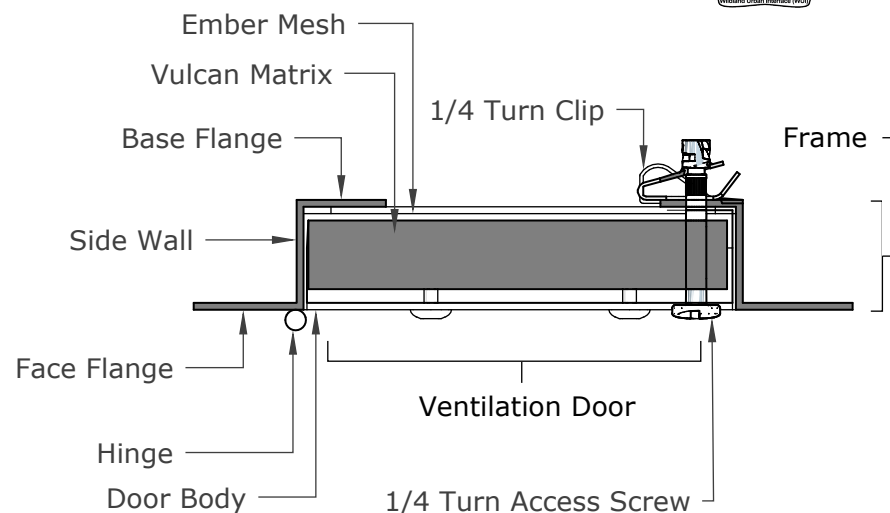
**For use to comply with SB 721, SB 326 where decks and balconies (EEE) require inspection.**



**FRAME ONLY (END VIEW)**



**TOP, BOTTOM, ELEVATION VIEWS**



**DETAILED VIEW**

**Installation Notes:**

Remove door before installation. Base flange is recommended for mounting.

Apply **EverKem 814+ intumescent fire caulking** or similar on back side of face flange and side wall prior to installation.

Use min #12 x 1-1/2", pancake head fasteners, 2 per joist w/ max span of 24".  
Min fastener shank penetration into joist: 1-1/2".  
When mounting depth is greater than 1", consider furring strips.

For detailed installation examples, please visit: [www.vulcanvents.com](http://www.vulcanvents.com)

Non-fire rated and ember only options are available from New Cal Metals.

**VSC424IF PRODUCT SPECIFICATION & DATA SHEET**

Model Description	<b>Continuous</b>	Flange Type	<b>NFVA</b>	Frame & Flange	<b>G90 Galvanized Steel - 20GA</b>
Model Number	<b>VSC424IF</b>	Inspection	<b>39 sq. in.</b>	Ventilation Door	<b>G90 Galvanized Steel - 24GA</b>
Model Size	<b>24" x 4"</b>			Intumescent Core	<b>5mm Hexagonal Matrix - Aluminum with intumescent coating</b>
				Ember Mesh	<b>14 Mesh - 304 Stainless Steel</b>

Proudly Manufactured By:  **NEW CAL**  
METALS INC.

[www.newcalmetals.com](http://www.newcalmetals.com)

