



14 Wide Series Gable Interior Retrofit (Use VM1424) Installation Instructions. For use with metal gable vents.

This kit includes the following:

- 1) One 13.5" x 24" Piece of treated honeycomb
- 2) One 13.5" x 24" Mesh

You will need the following tools & supplies:

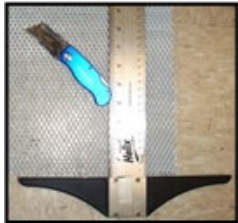
- Large tin snips
- Razor knife & straight edge (optional)
- Screw gun w/ tip for your screw type
- 10x 1' to 1.5" Sheet metals screws with washers

CAUTION: Remember to use extreme caution during installation of this project. Access from the roof: steep pitch roofs, high eaves, slippery conditions, and poor weather can contribute to a high risk of injury. Always maintain safe working practices. This work will be performed from inside of the attic. Access to the gable vents may require passing an obstacle course of trusses, false walls, heating units, wiring and plumbing. Never step directly onto the insulation or sheetrock and be wary of high temperatures.

Step 1: Clean the work area: Remove debris and clean dust, cobwebs, and leaves from the backside of the gable vent.

Step 2: Measure the height and width: The width usually follows the industry standard of 14" plus or minus the height.

Step 3: Cut the honeycomb and mesh: The easiest way to cut the honeycomb matrix is to lay it onto a flat surface, measure it and use a straight edge and a razor knife to score it. Then break away the excess honeycomb by bending it away at a 90 deg angle. Alternately, you can use a large pair of snips to cut the honeycomb. In the attic, there is generally no flat surface to work with, so this alternate method is easier, just make sure you cut a straight line so the end result is a good fit over the gable vent. The mesh may be cut with a pair of snips, to the same dimensions.



Step 4: attach the fire-safe material: Most gable vents have an existing 1/4" screen over the inside. Leave this screen in place. Starting with the honeycomb, then the mesh, place the sized pieces over the inside of the gable vent. Center the material in such a way as to cover any clear passage to the exterior. If it is daylight outside, this step is easier to see. Place a screw 1 1/4" sheet metal screw with washer at the top center of the mesh & honeycomb. Make sure the screw is over a solid part of the gable vent, so the screw will anchor properly. Tighten the screw until it grabs securely and tighten just enough to firmly hold the fire-safe materials. **DO NOT OVER TIGHTEN.** Over tightening will crush the honeycomb and can tear the mesh. Continue to place the screws with washers around the perimeter of the material fastening both securely onto the vent frame.



***CAUTION: IF EXISTING GABLE VENT IS CONSTRUCTED OF WOOD OR OTHER**

When completed, the retrofit will not be noticeable from the outside, but your gable vent will now be fire and ember safe. ***Remember** when painting or staining the exterior to mask off the face of the vent to prevent excess spray from sticking to the mesh.

